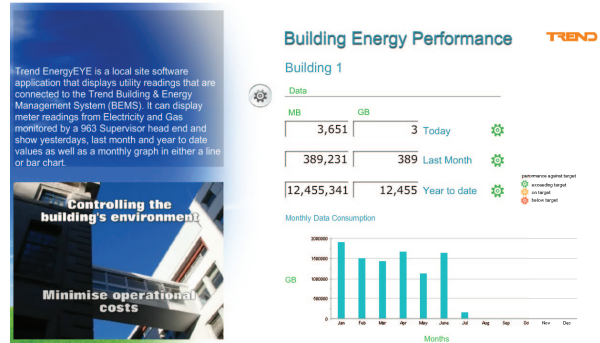


Trend EnergyEYE



Description

Trend EnergyEYE is a local site software application that displays utility readings that are connected to the Trend Building & Energy Management System (BEMS). It can display meter readings from Electricity, Gas and water monitored by a 963 Supervisor head end and show yesterday's, last month and year to date values as well as a monthly graph in either a line or bar chart.

It is a separate application to 963 that runs on a standard Microsoft Windows based computer and uses values stored within the Trend 963 database. This can be the 963 computer or a networked computer that can communicate with the 963 database over a standard office Ethernet network.

It has a high level of customisation giving the user the ability to change backdrops, labels and add multiple sites to the screen. Customer specific logo's and movies can be added to personalise the display.

Displays today's consumption, last months and year to date to give any user a snapshot view of the energy being consumed on that site. Targets can be set for daily CO² levels enabling a visual indication in the form of a traffic light. Instantly users can see that sites are performing well when there target indicators are all green or vice versa.

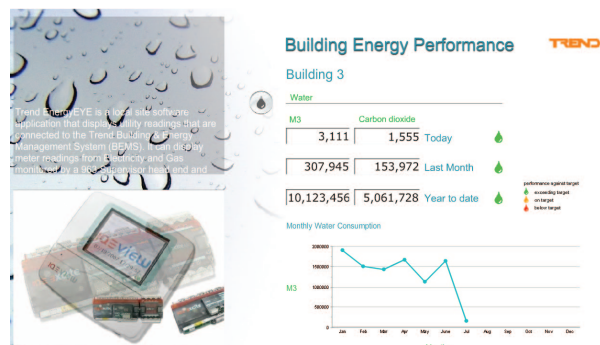
Features

- Shows utility (Electricity, Gas and water) data connected to a Trend BEMS controller with a 963 supervisor
- Tailored conversion factors for CO²
- Configured targets with traffic light indication of current consumption
- Scrolling text option
- Display FLV movie files
- Auto sizing application to screen connected to computer
- Configurable background and layout
- Runs as standalone application on networked Windows computer.

FUNCTIONALITY

Data is read by utility meters connected to the Trend BEMS and recorded by a 963 which then outputs an xml file with the values. The application then reads this data and displays it.

By default on the left hand side is a scrolling text area that displays user defined text. If required the display of this text can be turned off. The text colour, background colour and background opacity can be changed. A video (FLV format) is also displayed. The video can be specified. Specifying more than one video causes the specified videos to be played one after the other.(video).



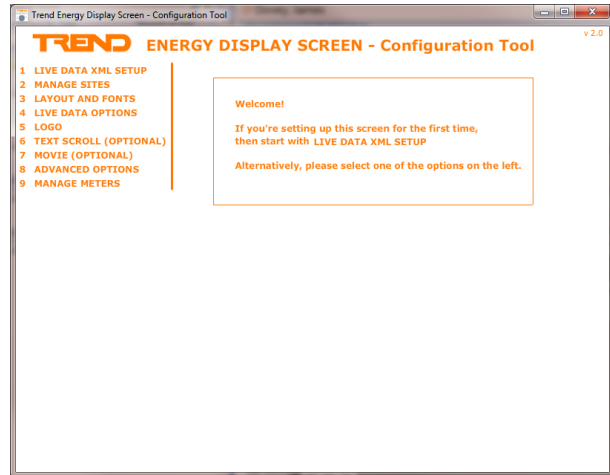
FUNCTIONALITY (continued)

On the right there are spot value readings with the CO₂ conversion and a graph below. The right hand side of the display can be set to rotate round as many sites as required. The time each graph and the spot value is displayed can be configured to suite user requirements. A logo is also displayed. The logo can be specified. Specifying more than one logo causes the specified videos to be displayed one after the other each remaining on the screen for a specified length of time.

The meters need to be recorded in the 963 as a rate of consumption over either a 15 or 30 minute period the application will then sum these values over a given period of time.

Note that the metering readings obtained by 963 are from meters for which Trend cannot guarantee accuracy.

Trend EnergyEYE is configured by two configuration wizard which allow the set up of the application to be easy carried out in an easy to follow way. This enables the user to change design elements such as backgrounds, logo's, movie files and CO₂ conversion factors. The wizard will guide you through configuring the screen by following the on screen instructions.



The application can run on the same computer as the 963 or a separate computer connected over an Ethernet network.

COMPATIBILITY

963 v2.20 or greater

INSTALLATION

A step-by-step installation program performs the installation of the Trend EnergyEYE software. After installation the software must be licensed, and configured to operate as required, as described in the Trend EnergyEYE Installation and Configuration Instructions (TG201069).

Note that if installing Trend EnergyEYE on a PC that is connected over an Ethernet network it is essential that a mapped network drive be configured on to this machine from the PC that has the 963 installed this is for the transferring of data files to the application, this configuration is not included as part of the Trend EnergyEYE installation.

Note that once the installation has been complete there are further instructions to follow to install key files to the PC running the 963 supervisor these can be found within the Trend EnergyEYE Installation and Configuration Instructions (TG201069).

ORDER CODES

Trend EnergyEYE

Trend EnergyEYE software on CD

SPECIFICATION

The specifications below apply to Trend EnergyEYE, and refer to a standard PC with mouse, keyboard, hard drive, CD drive, monitor, and sound capabilities (optional).

Processor	:2 GHz.
RAM	:1 GB for 32 bit operating systems or 2 GB for 64 bit operating systems.
Disk space	:40 GB hard disk with 1 GB free for installation.
Graphics card	:128 MB, 1280x1024 or higher resolution.

Network card	:Ethernet Network Card (required for to connect to the 963 over Ethernet).
Operating system	:Windows 7 Professional 32 bit :Windows 7 Professional 64 bit :Windows 8 Enterprise 32 bit

Note: Trend EnergyEYE is a real time application; installed PCs must have enough free resources to run Trend EnergyEYE under peak load conditions. System performance cannot be guaranteed if other 3rd party software is installed.

Version	:2.0.
---------	-------

Please send any comments about this or any other Trend technical publication to techpubs@trendcontrols.com

© 2013 Honeywell Technologies Sàrl, ECC Division. All rights reserved. Manufactured for and on behalf of the Environmental and Combustion Controls Division of Honeywell Technologies Sàrl, Z.A. La Pièce, 16, 1180 Rolle, Switzerland by its Authorized Representative, Trend Control Systems Limited.

Trend Control Systems Limited reserves the right to revise this publication from time to time and make changes to the content hereof without obligation to notify any person of such revisions or changes.

Trend Control Systems Limited

Albery House, Springfield Road, Horsham, West Sussex, RH12 2PQ, UK. Tel:+44 (0)1403 211888 Fax:+44 (0)1403 241608 www.trendcontrols.com

Trend Control System USA

6670 185th Avenue NE, Redmond, Washington 98052, USA. Tel:(425) 869-3900 Fax:(425) 869-8445 www.trend-america.com